

SMD placement machine

INOPLACER PRO



- 2 variants

PRO-22x with double head

PRO-26 with 6-fold placement head

- placement capacity 2.000 Bt/h resp. 8.000 Bt/h.

- inline for PCB up to 400 x 400 mm

- Chip 0201 - QFP 40x40 mm, BGA

- up to 64 single feeders

- dispenser / jet valve optional

SMD placement machine INOPLACER PRO

The INOPLACER PRO is a universal inline placement machine for production in SMD technology. The system realizes mature technology at a reasonable price. As with all INOPLACER models, the basis is a solid and precise machine construction using high-quality components.



Smart-Feeder with SQL-Database

The INOPLACER PRO 22x is a very universal machine with double insertion head and the possibility to integrate a dispenser. The tool changer gives a high flexibility of the components to be processed. The 50mm Z-stroke allows to place even large components. The PRO 22x reaches a placement speed of 2,000 components per hour.

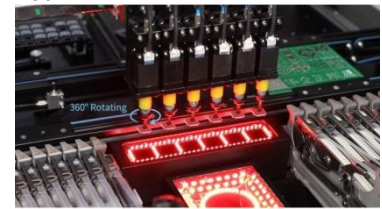


Inoplacer PRO 22D:
Doppelbestückkopf,
Dispenser und Werkzeugwechsler

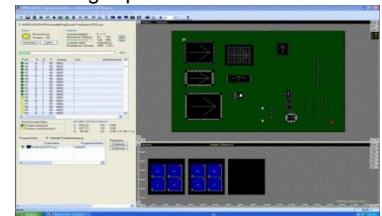


Spring loaded tools

The INOPLACER PRO 26 is designed for speed and has 6 placement heads and also 6 high-speed cameras. Since mainly chip types are assembled, there is no tool changer and the Z-stroke of 20mm is sufficient. The PRO 26 achieves a placement speed of 8,000 components per hour.



Inoplacer PRO 26:
6fach-Bestückkopf,
mit 6 HighSpeed-Kameras



INOSOFT
(compatible with all INOPLACERs)

Technical Data

	IP PRO22x	IP PRO26
XY axis	Panasonic A6 Servomotor ball screw and linear slide	
working range XY	639×656 mm	
ZD axis	Stepper HighResolution	
No. of placement heads	2	6
Z-stroke	50mm	20mm
Max. Component height	<25mm	<5.5mm
Z-axis rotation angle	0-360°	
Assembly precision	0.025 mm	0.025 mm
Visual camera	1 TopView, 1HD	1 TV, 1 HD, 6HS
theoret. Speed	6.000 Bt/h	11.000 Bt/h
real speed	2.000 Bt/h	8.000 Bt/h
Dispenser	opt. AirPulse opt. SIGMA	---
Jetter	opt. AeroJet	---
Feeder	Smart Feeder 8, 12, 16, 24, 32 mm	
No. Feeder	max 64	
Stick feeder	max 2	
IC tray	max 2	

	IP PRO22x	IP PRO26
Placement tools	Juki Series Nozzle	
smallest chip	0201	
largest component	max.40×40mm, MFOV90×90mm pitch > 0.3mm	
machine type	Inline	
PCB minimum size	45*45 mm	
PCB maximum size	500×400mm	
PCB Dicke	≤2 mm	
Allowable. PCB Curvature	<1 mm	
Transfer	3 segment Band, L=>R	
Transfer height	950mm +/- 25mm	
Interface	Standard SMEMA connector	
PC System	IPC, Microsoft WIN10	
Operating Software	INOSOFT + INOVISION	
compatible file formats	CSV / SQL	
Programming method	Online, Offline, auto. CAD-Import	
Power Supply	AC220V±10% 50Hz, 1.200W	
Compressed air	6 bar	
Dimensions	1335*1200*1390 mm	
Weight	440kg	