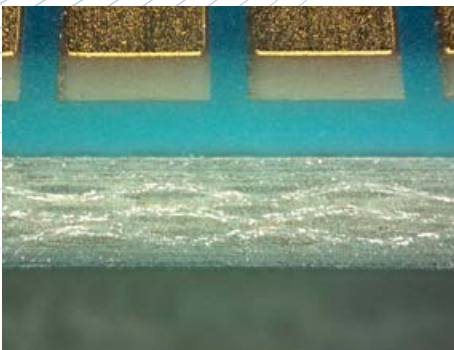
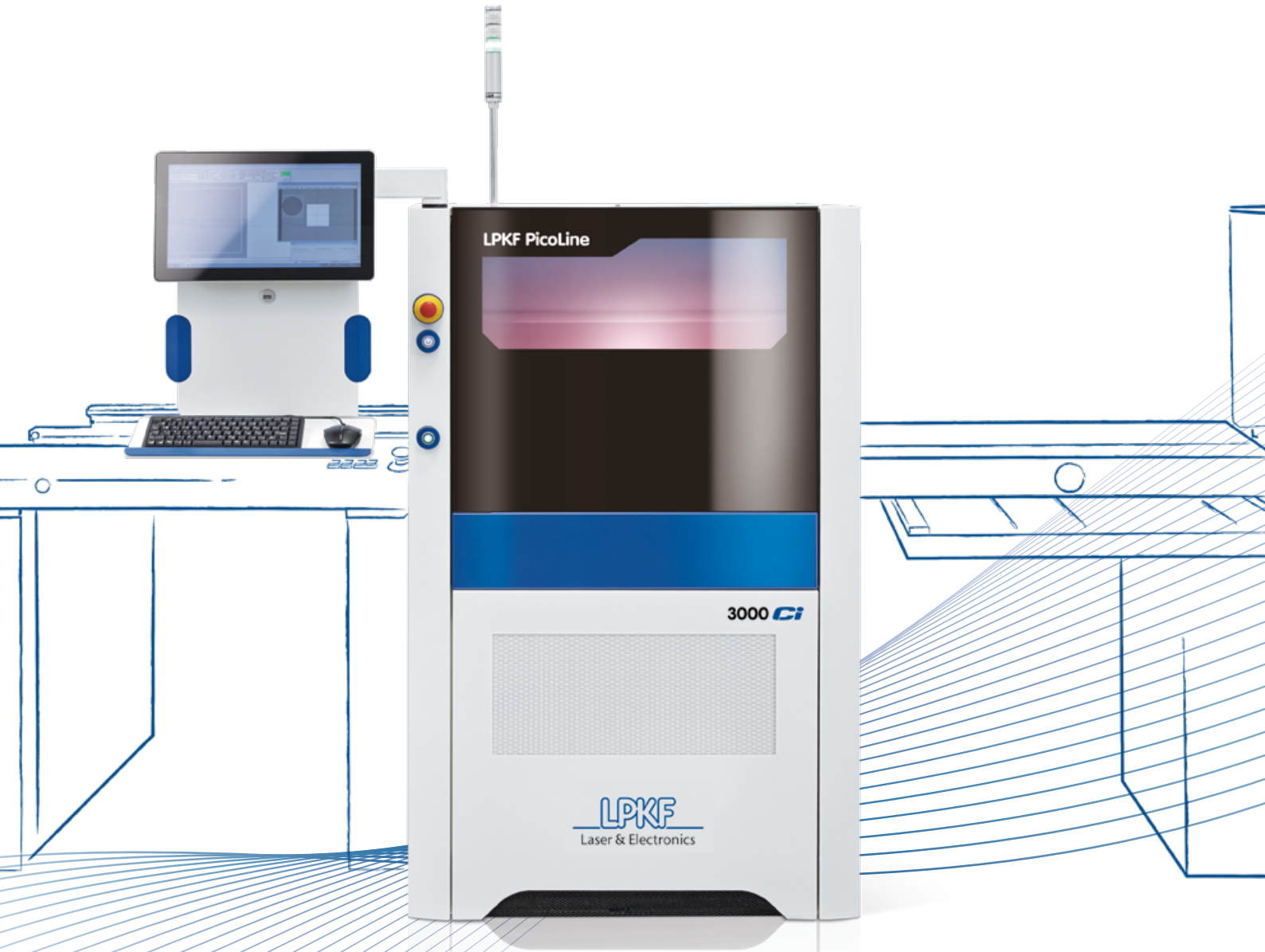


# Automated Laser Depaneling of Rigid and Flexible PCBs

## LPKF PicoLine 3000 Ci



## Shorter Product Pipelines

Just click on the layout files instead of manufacturing expensive tools – that's how easy the LPKF PicoLine 3000 Ci can be employed to process different products. Users enjoy cutting edge competitive advantages thanks to the very high quality and flexible production planning. The PicoLine 3000 Ci systems are remarkably compact, easy to operate, with a very good price performance ratio – a welcome addition to the electronic production team.

The highly sophisticated LPKF CleanCut Technology in combination with picosecond short laser pulses, reduce carbonization of the cut areas to zero.

### Technical Data: LPKF PicoLine 3000 Ci

<b>Laser (class 1)</b>	Power up to 48 W, wavelength 532 nm, ps pulse duration
<b>Working area (X x Y x Z)*</b>	300 mm x 250 mm x 11 mm (11.8" x 9.8" x 0.4")
<b>Height of assembly (top / bottom)</b>	27 mm / 7 mm (1.1" / 0.3")
<b>Positioning accuracy</b>	± 25 µm (1 mil) @ 22 °C ± 2 °C (71.6 °F ± 3.6 °F)
<b>Diameter of focussed laser beam</b>	25 µm (1 mil)
<b>System dimensions (W x H x D), weight</b>	875 mm x 1530 mm x 2000 mm (34.5" x 60.2" x 78.8")**, ~ 1000 kg (~2205 lbs)
<b>Operating conditions</b>	
<b>Facility requirements</b>	400 VAC, 50 – 60 Hz, 16 A, 6.5 kVA, 0.6 MPa (87 PSI), 130 l/min
<b>Required accessories</b>	Exhaust unit, external conveyor, production fixture, SMEMA interface
<b>Optional accessories</b>	Conveyor vacuum supporting plate, MES connection

\* Max. recognition area (X x Y): 300 mm x 250 mm (11.8" x 9.8")

\*\* Height incl. status light: 2020 mm (79.6")

**PicoLine 3000 Ci systems feature: PicoLine 3548 Ci (48 Watt laser source).**



**LPKF Service & Support**  
 LPKF provides worldwide premium customer support. Learn more:  
[www.lpkf.com/support](http://www.lpkf.com/support)



LPKF Laser & Electronics AG sells and markets products and provides support in more than 50 countries. Find your local representative at [www.lpkf.com](http://www.lpkf.com).

#### Worldwide (LPKF Headquarters)

LPKF Laser & Electronics AG Osteriede 7 30827 Garbsen Germany  
 Phone +49 (5131) 7095-0 [info@lpkf.com](mailto:info@lpkf.com) [www.lpkf.com](http://www.lpkf.com)

#### North / Central America

LPKF Laser & Electronics North America  
 Phone +1 (503) 454-4200 [sales@lpkfusa.com](mailto:sales@lpkfusa.com) [www.lpkfusa.com](http://www.lpkfusa.com)

#### China

LPKF Tianjin Co., Ltd.  
 Phone +86 (22) 2378-5318 [sales.china@lpkf.com](mailto:sales.china@lpkf.com) [www.lpkf.com](http://www.lpkf.com)

#### Japan

LPKF Laser & Electronics K.K. Japan  
 Phone +81 (0) 47 432 5100 [info.japan@lpkf.com](mailto:info.japan@lpkf.com) [www.lpkf.com](http://www.lpkf.com)

#### South Korea

LPKF Laser & Electronics Korea Ltd.  
 Phone +82 (31) 689 3660 [info.korea@lpkf.com](mailto:info.korea@lpkf.com) [www.lpkf.com](http://www.lpkf.com)



Made in Germany