

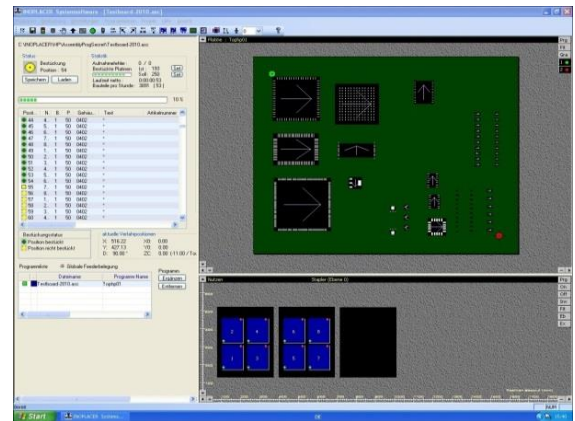
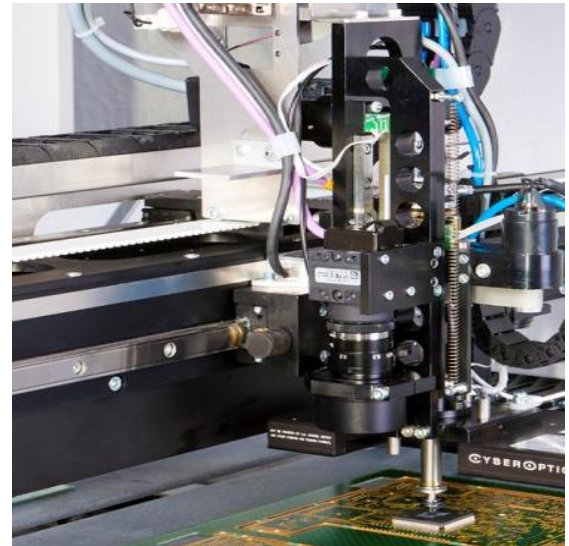
SMD placement machine

INOPLACER COMPACT IP-CS



- working area 320x550 mm
- chip 0402 - QFP 40x40 mm, BGA, μ BGA
- up to 131x 8mm-feeder
- component height max. 35 mm
- assembly capacity 3000 c/h

SMD placement machine INOPLACER COMPACT IP-CS



Technical specifications

usable working area	320 x 550 mm	dimensions HxWxD	1500x1030x1000 mm
smallest component (with vision)	0402	floor space	2000 x 2000 mm
Largest component (with vision)	40 x 40 mm	environmental conditions	20-25°C, 48-60 %
max. assembly capacity	3000 c/h.	humidity	ca. 300 kg
assembly capacity max. real terms.	1500-2500 c/h.	weight	ca. 300 kg
placing accuracy	typ. +/- 0,09 mm	colour	light gray RAL 7035
(with vision system) QFP	typ. +/-0,05 mm		
resolution X / Y – axis	0,0125 mm		
		Solid machine and vision system guarantee very precise and reproducible placement results.	
positioning Z – axis	0,01 mm	The SMD placement machine	
positioning D-axis	0,025°	INOPLACER COMPACT	
max. feeders (8 mm single feeder)	85	assembles your PCBs with SMD components with a very high accuracy. It is particularly suitable for small and medium batch sizes..	
max. feeders (8mm w. feeder cassettes)	131	Reserve technical changes,	
electr. power supply	230 V/50 Hz	Images show options and accessories	
compressed air	6 bar, dry, oil-free ca. 50 L/min		